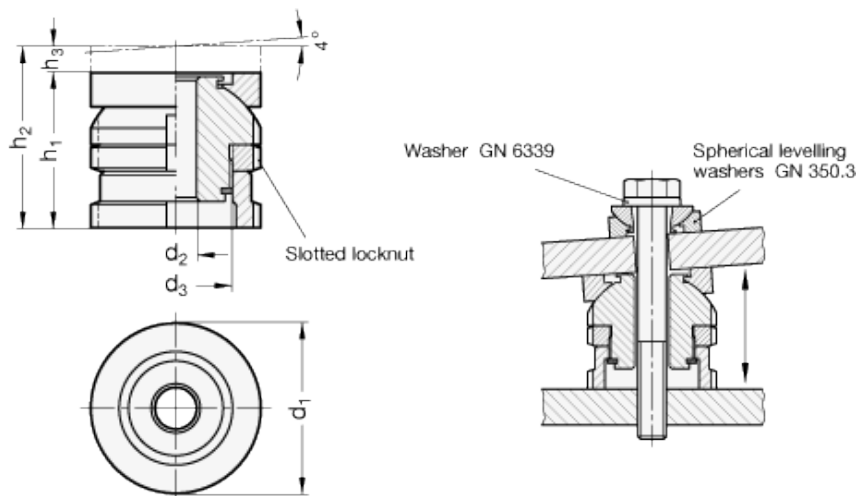


GN 350.5-NI

Levelling sets



INOX
Stainless Steel



technical informations

Material

AISI 303 (X 10 CrNiS 18-9)

F_1 : max. total load.

F_2 : max. load after deduction of the max. preload for screws 6.8, $\mu = 0.14$.

Accessories on request

C-Spanner DIN 1810 (code no. see table).

Features and applications

Levelling sets GN 350.5 are used for levelling, adjusting and linking operations. The spherical washer allows precise installation of two non parallel planes at a required gradient up to $\approx 4^\circ$.

They comprise a threaded upper sleeve and a female threaded lower sleeve. The fine thread allows a stepless and precise setting and locking using the C-Spanner DIN 1810. A locking ring serves as a height limiter for the max. height.

Standard Elements

Main dimensions

Static Load F in kN

Weight

Description	d ₁	d ₂	h ₁	d ₃	h ₂	h ₃	for screw	F ₁	F ₂	C-Spanner	g
GN 350.5-25-5.5-27-NI	25	5.5	27	M15x1	31	4	M5	27.1	22.24	DIN 1810-A25-28	90
GN 350.5-25-5.5-40-NI	25	5.5	40	M15x1	50	10	M5	27.1	22.24	DIN 1810-A25-28	95
GN 350.5-25-6.6-27-NI	25	6.6	27	M15x1	31	4	M6	27.1	20.26	DIN 1810-A25-28	80
GN 350.5-25-6.6-40-NI	25	6.6	40	M15x1	50	10	M6	27.1	20.26	DIN 1810-A25-28	85
GN 350.5-32-6.6-32-NI	32	6.6	32	M20x1	37	5	M6	43.4	36.56	DIN 1810-A30-32	140
GN 350.5-32-6.6-49-NI	32	6.6	49	M20x1	63	14	M6	43.4	36.56	DIN 1810-A30-32	147
GN 350.5-32-9-32-NI	32	9	32	M20x1	37	5	M8	43.4	30.86	DIN 1810-A30-32	130
GN 350.5-32-9-49-NI	32	9	49	M20x1	63	14	M8	43.4	30.86	DIN 1810-A30-32	147
GN 350.5-32-11-32-NI	32	11	32	M20x1	37	5	M10	43.4	23.41	DIN 1810-A30-32	120
GN 350.5-32-11-49-NI	32	11	49	M20x1	63	14	M10	43.4	23.41	DIN 1810-A30-32	127
GN 350.5-45-11-41-NI	45	11	41	M30x1.5	48	7	M10	84	64.01	DIN 1810-A45-50	360
GN 350.5-45-11-61-NI	45	11	61	M30x1.5	79	18	M10	84	64.01	DIN 1810-A45-50	370
GN 350.5-45-13.5-41-NI	45	13.5	41	M30x1.5	48	7	M12	84	54.82	DIN 1810-A45-50	350
GN 350.5-45-13.5-61-NI	45	13.5	61	M30x1.5	79	18	M12	84	54.82	DIN 1810-A45-50	390
GN 350.5-45-17.5-41-NI	45	17.5	41	M30x1.5	48	7	M16	84	28.90	DIN 1810-A45-50	340
GN 350.5-45-17.5-61-NI	45	17.5	61	M30x1.5	79	18	M16	84	28.90	DIN 1810-A45-50	370
GN 350.5-58-17.5-53-NI	58	17.5	53	M40x1.5	62	9	M16	148	92.90	DIN 1810-A58-62	780
GN 350.5-58-17.5-79-NI	58	17.5	79	M40x1.5	102	9	M16	148	92.90	DIN 1810-A58-62	880
GN 350.5-58-22-53-NI	58	22	53	M40x1.5	62	9	M20	148	59.08	DIN 1810-A58-62	770
GN 350.5-58-22-79-NI	58	22	79	M40x1.5	102	23	M20	148	59.08	DIN 1810-A58-62	840
GN 350.5-58-26-53-NI	58	26	53	M40x1.5	62	9	M24	148	20.30	DIN 1810-A58-62	760
GN 350.5-58-26-79-NI	28	26	79	M40x1.5	102	23	M24	148	20.30	DIN 1810-A58-62	830
GN 350.5-70-22-61-NI	70	22	61	M50x1.5	71	10	M20	225	136.08	DIN 1810-A68-75	1300
GN 350.5-70-22-94-NI	70	22	94	M50x1.5	123	29	M20	225	136.08	DIN 1810-A68-75	1418
GN 350.5-70-26-61-NI	70	26	61	M50x1.5	71	10	M24	225	97.30	DIN 1810-A68-75	1200
GN 350.5-70-26-94-NI	70	26	94	M50x1.5	123	29	M24	225	97.30	DIN 1810-A68-75	1350
GN 350.5-70-33-61-NI	70	33	61	M50x1.5	71	10	M30	225	20.60	DIN 1810-A8-75	1100
GN 350.5-70-33-94-NI	70	33	94	M50x1.5	123	29	M30	225	20.60	DIN 1810-A68-75	1200
GN 350.5-80-26-67-NI	80	26	105	M60x2	79	12	M24	323	195.30	DIN 1810-A80-90	1650
GN 350.5-80-26-105-NI	80	26	105	M60x2	144	39	M24	323	195.30	DIN 1810-A80-90	1900
GN 350.5-80-33-67-NI	80	33	67	M60x2	79	12	M30	323	118.60	DIN 1810-A80-90	1550
GN 350.5-80-33-105-NI	80	33	105	M60x2	144	39	M30	323	118.60	DIN 1810-A80-90	1800
GN 350.5-80-39-67-NI	80	39	67	M60x2	79	12	M36	323	38.20	DIN 1810-A80-90	1450
GN 350.5-80-39-105-NI	80	39	105	M60x2	144	39	M36	323	38.20	DIN 1810-A80-90	1750



STANDARD MACHINE ELEMENTS WORLDWIDE